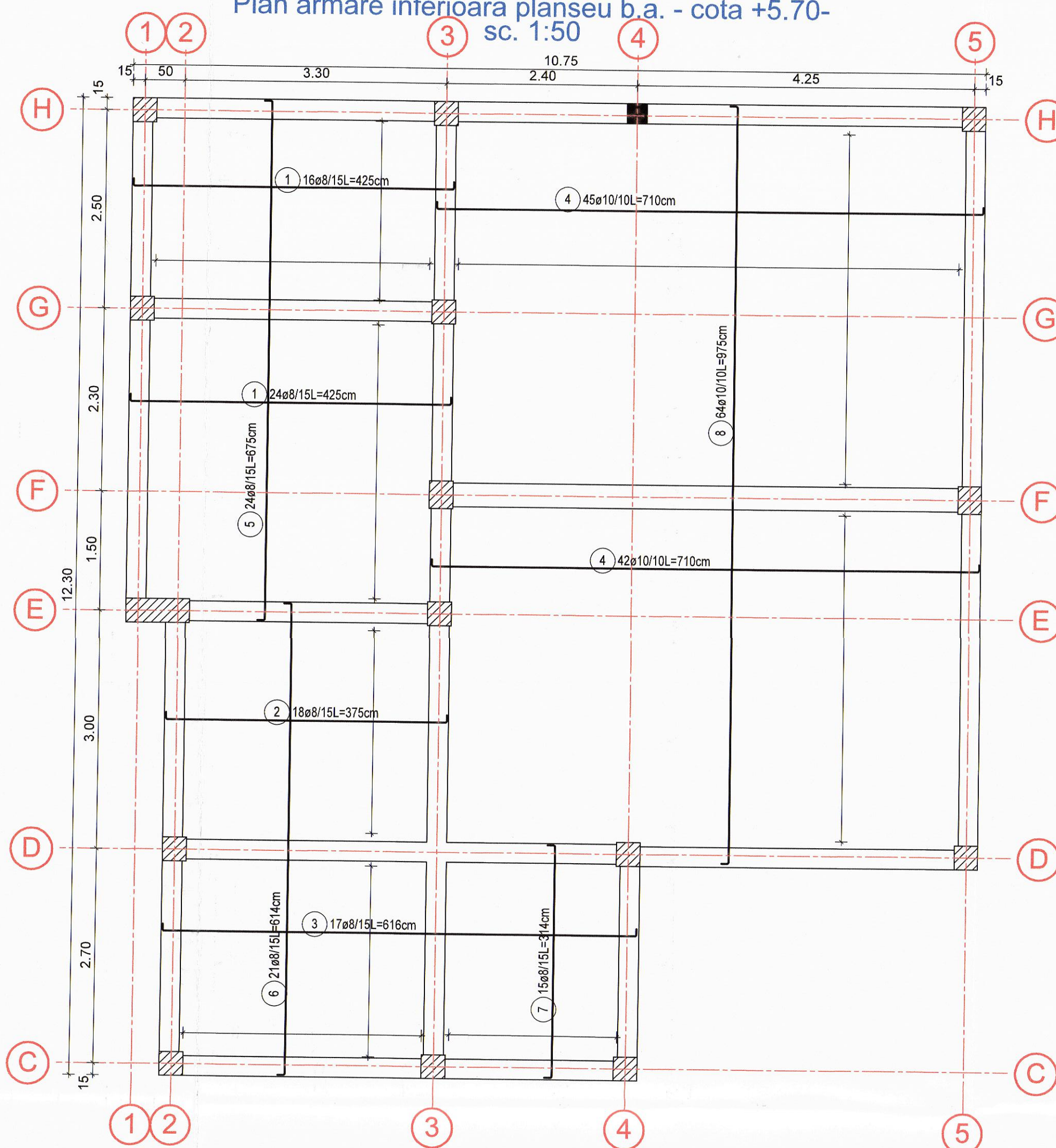


Extras armare grinzi b.a - cota +5.70-

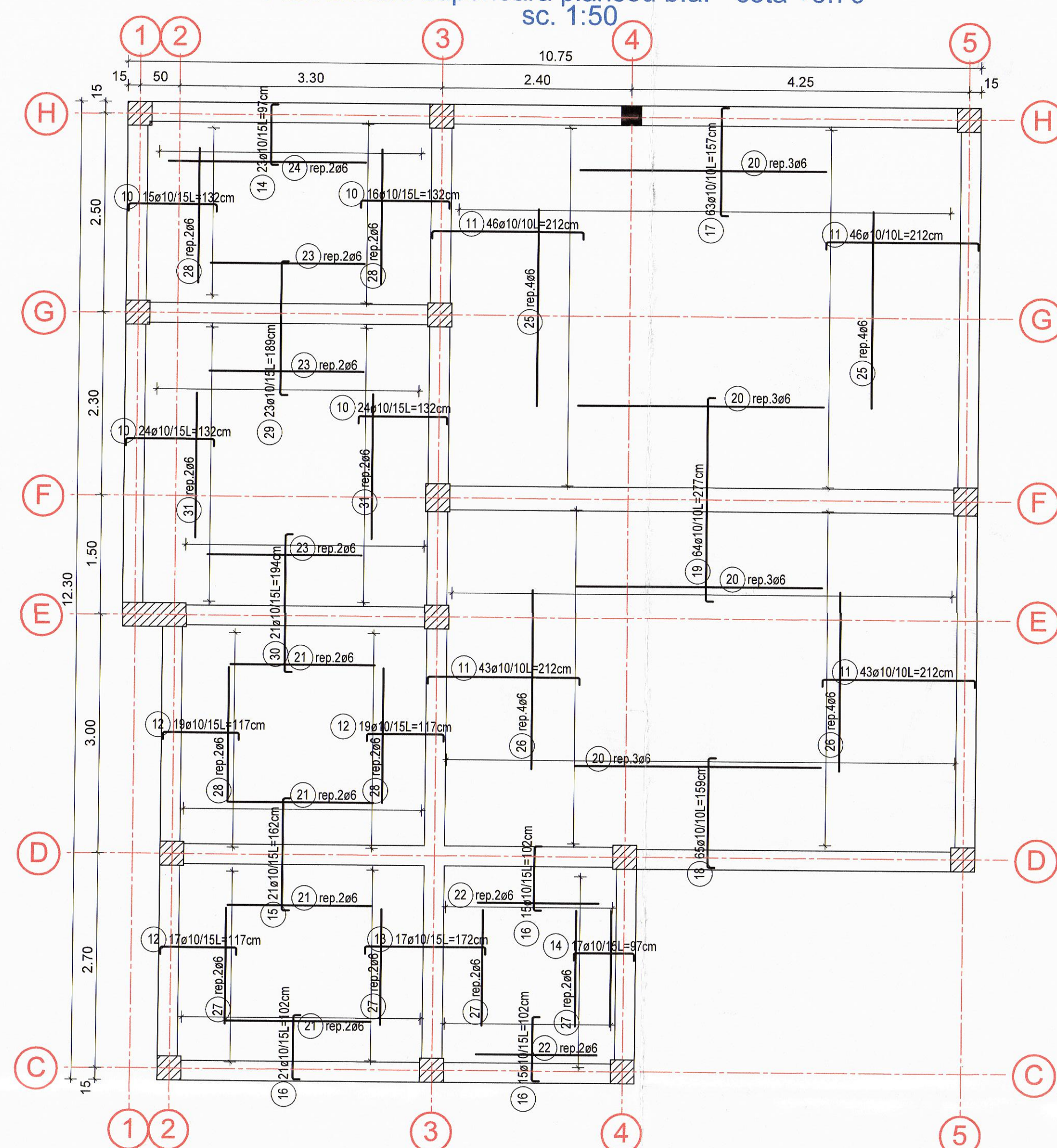
Poz.	Buc.	Ø	Lungime unitara [m]	Forma fasonata (fara scara)	Lungime totala [m]	Greutate [kg]
1	198	8	1.24		245.52	96.98
2	4	16	6.24		24.96	39.41
3	4	16	2.03		8.12	12.82
4	4	16	4.32		17.28	27.29
5	2	16	4.52		9.04	14.27
6	2	16	1.87		3.74	5.91
7	4	10	3.99		15.96	9.83
8	2	16	1.39		2.78	4.39
9	111	8	0.40		44.40	17.54
10	2	10	5.92		11.84	7.29
11	4	16	1.55		6.20	9.79
12	2	16	4.49		8.98	14.18
13	4	16	4.29		17.16	27.10
14	4	20	7.27		29.08	71.71
15	2	18	7.69		15.38	30.73
16	4	18	2.39		9.56	19.10
17	52	8	1.54		80.08	31.63
18	4	12	6.89		27.56	24.47
19	64	8	0.45		28.80	11.38
20	4	16	6.24		24.96	39.41
21	3	16	6.84		20.52	32.40
22	2	16	2.28		4.56	7.20
23	1	16	1.23		1.23	1.94
24	2	16	2.48		4.96	7.83
25	1	16	1.57		1.57	2.48
26	1	16	1.37		1.37	2.16
27	2	16	7.97		15.94	25.17
28	2	16	5.36		10.72	16.93
29	2	10	7.47		14.94	9.20
30	2	10	5.07		10.14	6.25
31	2	16	6.44		12.88	20.34
32	2	16	7.15		14.30	22.58

		Lungime totala [m]				
		BST500S				
		8	10	12	16	20
Total	m (m²)	398.80	52.88	27.56	211.27	24.94
	kg/m (kg/m²)	0.395	0.616	0.888	1.579	1.998
	kg	157.53	32.57	24.47	333.60	49.83
	kg	669.71				

Plan armare inferioara planseu b.a. - cota +5.70- sc. 1:50



Plan armare superioara planseu b.a. - cota +5.70- sc. 1:50



Extras armare planseu b.a. - cota +5.70-

Poz.	Buc.	Ø	Lungime unitara [m]	Forma fasonata (fara scara)	Lungime totala [m]	Greutate [kg]	Poz.	Buc.	Ø	Lungime unitara [m]	Forma fasonata (fara scara)	Lungime totala [m]	Greutate [kg]
1	40	8	4.25		170.00	67.15	18	65	10	1.59		103.35	63.66
2	18	8	3.75		67.50	26.66	19	64	10	2.77		177.28	109.20
3	17	8	6.16		104.72	41.36	20	12	6	3.11		37.32	8.29
4	87	10	7.10		617.70	380.50	21	8	6	1.82		14.56	3.23
5	24	8	6.75		162.00	63.99	22	4	6	1.53		6.12	1.36
6	21	8	6.14		128.94	50.93	23	6	6	1.94		11.64	2.58
7	15	8	3.14		47.10	18.60	24	2	6	2.49		4.98	1.11
8	64	10	9.75		624.00	384.38	25	8	6	2.48		19.84	4.40
9	120	12	1.50		180.00	159.84	26	8	6	2.26		18.08	4.01
10	79	10	1.32		104.28	64.24	27	8	6	1.46		11.68	2.59
11	178	10	2.12		377.36	232.45	28	8	6	1.70		13.60	3.02
12	55	10	1.17		64.35	39.64	29	23	10	1.89		43.47	26.78
13	17	10	1.72		29.24	18.01	30	21	10	1.94		40.74	25.10
14	40	10	0.97		38.80	23.90	31	4	6	1.83		7.32	1.63
15	21	10	1.62		34.02	20.96							
16	51	10	1.02		52.02	32.04							
17	63	10	1.57		98.91	60.93							

		Lungime totala [m]			
		BST500S			
		6	8	10	12
Total	m (m²)	145.14	680.26	2405.52	180.00
	kg/m (kg/m²)	0.222	0.395	0.616	0.888
	kg	32.22	268.70	1481.80	159.84
	kg	1942.57			

Materiale:
Beton: conform SR EN 206-1
Beton armat:
Beton clasa C20/25 - XC1; D11/20; A/C = 0.50; S3; C_{tr} 0.1%, D_{max}16
-stapi, samburi, centuri, grinzi, scara, planseu b.a.
OTEL
BST500S, clasa de ductilitate

se vor citi impreuna plansele R13,R14, R15

NOTA:
Turnarea planseului din b.a se realizeaza concomitent
cu turnarea centurilor si grinzelor etajului curent

Categoria de importanta a constructiei, conform HGR 766/1997:C
Clasa de importanta conform P100-1/2013-III.
ag = 0.25g, T_c = 0.7 s,
Clasa de expunere a constructiei : mediu uscat moderat.

PROIECTARE, CONSULTANTA,
ASISTENTA TEHNICA IN DOMENIILE
CONSTRUCTII CIVILE,
INDUSTRIALE SI AGRICOLE

SCALA: 1:50

MANAGER PROIECT: Ing. GHEORGHE JUNE

SEF PROIECT: arh. Cristian Musat

PROIECTAT: Ing. Rania Cristinel Nicolae

DESENAT: Ing. Rania Cristinel Nicolae

data: dec. 2019

COMPLEX DE 4 LOCUINTE PROTEJATE SI CENTRU DE ZI,
COMUNA TOVENI, SATUL BARSESTI DE JOS,
JUDETUL ARGES cod SIRS 120099

BENEFICIAR: DIRECTIA GENERALA A IM ASISTENTA SOCIALA
SI PROTECTIA COPILILOR ARGES

ADRESA: mui. Ploesti, Calea Dragasani nr.8, jud. Argos

ADRESA IMOBIL: COMUNA TOVENI, SATUL BIRSESTI DE JOS, JUDETUL ARGES

PLANSA R 34 FAZA P.T.H.-D.E

